



74370-9993 Harley Davidson Motorcycles made after 3/6/02



**74370-9993**

**Barbie Harley Davidson®**

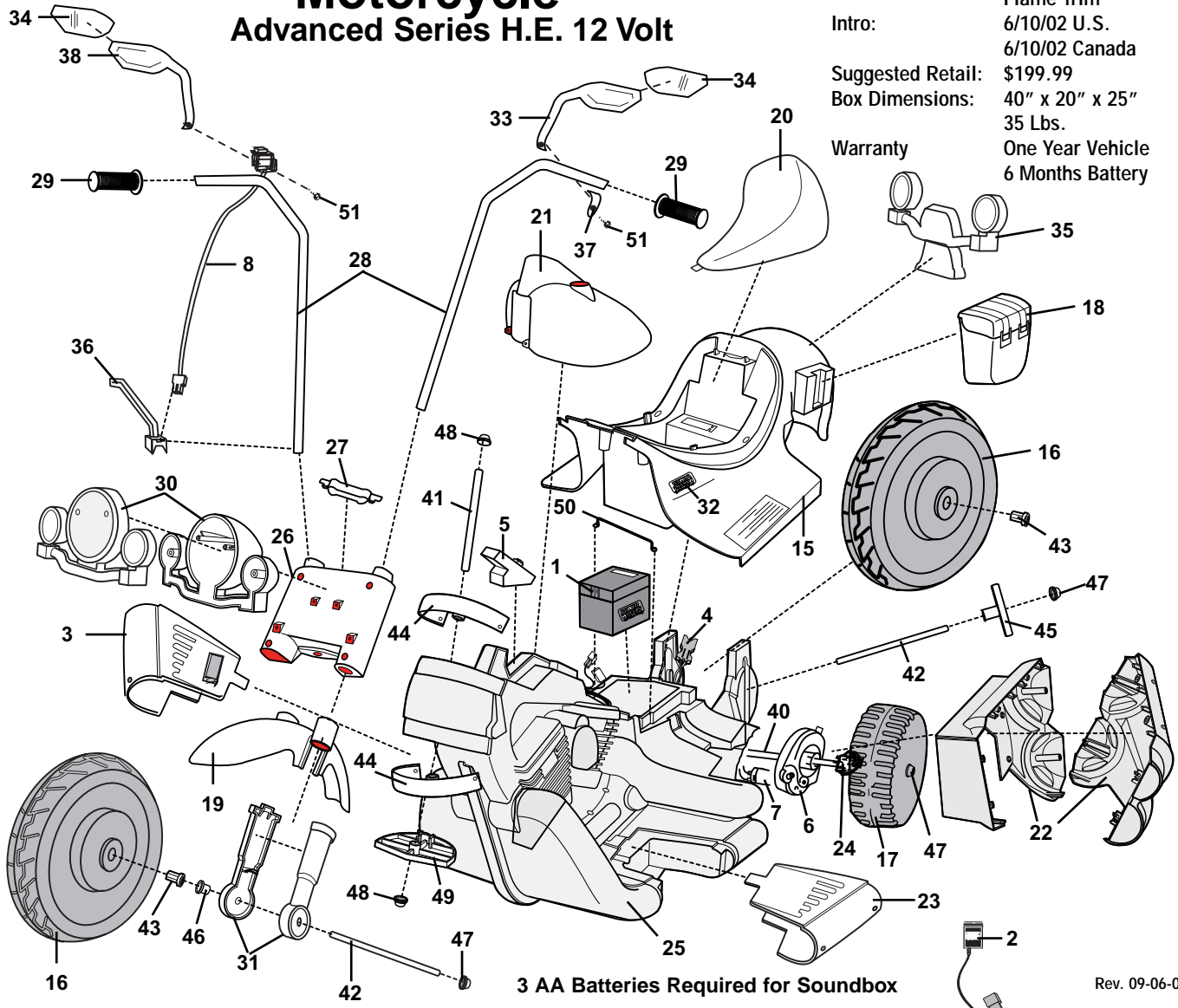
**Motorcycle**  
Advanced Series H.E. 12 Volt

Age Range: 3-7 Yrs.  
Weight Limit: 65 Lbs.  
Surfaces: Grass & Hard  
Speed: 2.5 / 5.0 MPH Forward  
2.5 MPH Reverse

Colors: Pink Body  
Flame Trim  
Intro: 6/10/02 U.S.  
6/10/02 Canada

Suggested Retail: \$199.99  
Box Dimensions: 40" x 20" x 25"  
35 Lbs.

Warranty: One Year Vehicle  
6 Months Battery



3 AA Batteries Required for Soundbox

Rev. 09-06-02 Pav

Item No.	Description	Part No.	Qty.	Item No.	Description	Part No.	Qty.	Item No.	Description	Part No.	Qty.
<b>Working / Electrical Parts</b>											
1	12 Volt Battery	00801-0638	1	23	Footboard / Left	74370-2249	1	43	Bushing (hex)	73233-2559	4
2	12V Charger	00801-0972	1	24	Driver	73233-2239	2	44	Bushing (steering)	74370-2359	2
3	Right Footboard w/switch	74370-9239	1	25	Frame (incl. L & R sides)	74370-9219	1	45	Bushing (axle/silver)	74370-2379	2
	When sending the footboard assm please order instruction #74290-0922 for consumer										
4	<b>Wiring Harness Assembly</b>	<b>74287-9799</b>	1	26	Fork (upper)	74370-2349	1	46	Bushing (round/black)	74550-2689	2
5	Soundbox	74290-9559	1	27	Fork Cover	74370-2389	1	47	.437 Cap Nut	0801-0226	6
6	<b>#7 Motor Gearbox Assm.</b>	<b>00968-2901</b>	2	28	Handlebar Set (banded)	74370-9529	1	48	.345 Cap Nut	0801-0604	3
7	<b>Motor w/Pinion</b>	<b>74290-9539</b>	2	29	Handgrip	74370-2399	2	49	Steering Stop	74370-2369	1
8	Handlebar Harness w cover	74287-9759	1	30	Headlight Assembly	74370-9289	1	50	Battery Retainer	74290-4419	1
<b>Plastic / Other Parts</b>											
15	Body (N/A)	74370-2509	1	31	Shock Set (banded)	74370-9329	1	51	Screw #8 x 1/2	0801-0202	2
16	Large Wheel	74290-2159	2	32	PW Emblem	74460-9069	2	<b>Parts Not Shown</b>			
17	Drive Wheel (Small)	74290-9269	2	33	Mirror Left	75209-2449	1	Decal Sheet	74370-0420	1	
18	Saddle Bag	74370-2129	2	34	Lens Set	75209-2469	2	Owner's Manual	74370-0923	1	
19	Front Fender	74370-213A	1	35	Tail Light Assm	75210-8010	1	Small Parts Bag	74370-9269	1	
20	Seat	74290-2309	1	36	Wire Cover	74287-2439	1	Hardware Bag	73210-9289	1	
21	Gas Tank	74370-214A	1	37	Mirror Clamp	75209-2429	1	Large Parts Bag	74370-9459	1	
22	Exhaust Set (banded)	74370-9169	1	38	Mirror Right	74287-2429	1	<b>Gearbox W/Out Motor</b>			
<b>Hardware / Metal Parts</b>											
				40	Axle (drive wheel)	74290-4509	1	Control Switch (Forward/Reverse)	00801-0885	1	
				41	Axle (fork)	74290-4529	1	3/4" Plastite Screw	0912-8001	61	
				42	Axle (wheel)	74290-4519	2	<b>Footswitch</b>			
									<b>00801-0933</b>	1	

Items in bold & underlined print are only to be ordered by a service center.

N/A = Not Available