



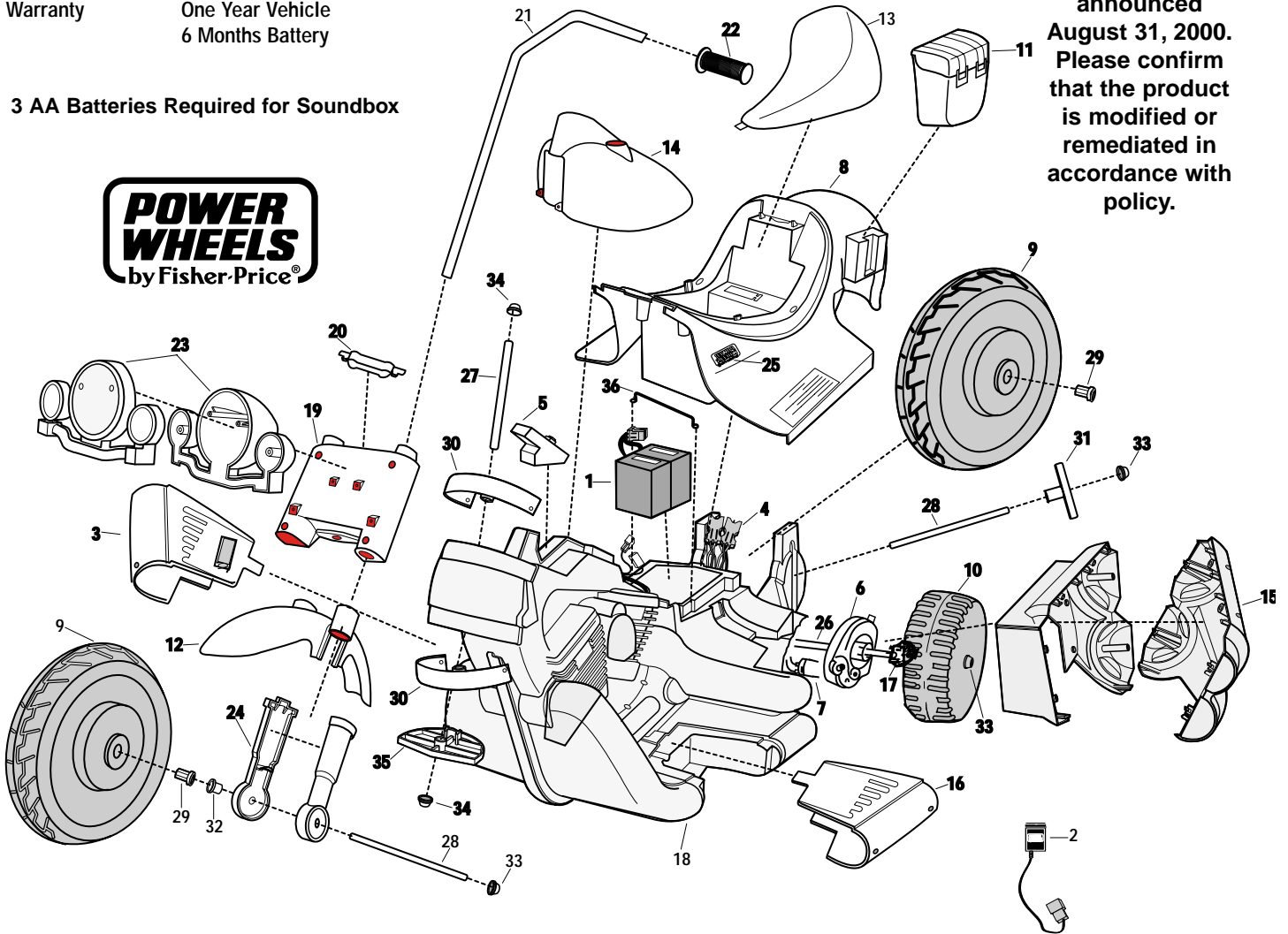
Age Range: 3-7 Yrs.
 Weight Limit: 65 Lbs.
 Surfaces: Grass & Hard
 Speed: 2.5 / 5.0 MPH Forward
 2.5 MPH Reverse
 Colors: Red Body
 Flame Trim
 Intro: 8-20-99 U.S.
 11-29-99 Canada
 Suggested Retail: \$199.99
 Box Dimensions: 40" x 20" x 25"
 35 Lbs.
 Warranty: One Year Vehicle
 6 Months Battery

74290-9993

Harley Davidson® Motorcycle Advanced Series Non H.E. 12 Volt

This product is affected by the PW Harely recall announced August 31, 2000. Please confirm that the product is modified or remediated in accordance with policy.

3 AA Batteries Required for Soundbox



Item No.	Description	Part No.	Qty.	Item No.	Description	Part No.	Qty.	Item No.	Description	Part No.	Qty.	
Working / Electrical Parts												
1	6 Volt Battery	00801-0712	2	14	Gas Tank	74290-214A	1	29	Bushing (hex)	73233-2559	4	
2	12V Charger	00801-0804	1	15	Exhaust Set (banded)	74290-9169	1	30	Bushing (steering)	74290-2359	2	
3	Footboard Assembly w/switch	74290-9239	1	16	Footboard / Left	74290-2249	1	31	Bushing (axle/silver)	74290-2379	2	
4	Wiring Harness Assembly	74290-9799	1	17	Driver	73233-2239	2	32	Bushing (round/black)	74550-2689	2	
5	Soundbox	74290-9559	1	18	Frame (incl. L & R sides)	74290-9219	1	33	.437 Cap Nut	0801-0226	6	
6	#7 Motor Gearbox Assm.	74290-9509	2	19	Fork (upper)	74290-2349	1	34	.345 Cap Nut	0801-0215	3	
7	Motor w/Pinion	74290-9539	2	20	Fork Cover	74290-2389	1	35	Steering Stop	74290-2369	1	
				21	Handlebar Set (banded)	74290-9029	1	36	Battery Retainer	74290-4419	1	
				22	Handgrip	74290-2399*	2	Parts Not Shown				
				*74290-2399 hand grip is used on the left and right side				Decal Sheet	74290-0310	1		
Plastic / Other Parts				23	Headlight Assembly	74290-9289	1	Literature Bag	74290-9019	1		
8	Body (N/A)	74290-2109	1	24	Shock Set (banded)	74290-9329	1	Owner's Manual	74290-0920	1		
9	Large Wheel	74290-2159	2	25	PW Emblem	74460-9069	2	Small Parts Bag	74290-9259	1		
10	Drive Wheel (Small)	74290-2269	2	Hardware / Metal Parts				Hardware Bag	74290-9279	1		
11	Saddle Bag	74290-2129	2	26	Axle (drive wheel)	74290-4509	1	Large Parts Bag	74290-9249	1		
12	Front Fender	74290-213A	1	27	Axle (fork)	74290-4529	1	Gearbox W/Out Motor	74290-9519	1		
13	Seat	74290-2309	1	28	Axle (wheel)	74290-4519	2	Control Switch	00801-0873	2		
								3/4" Plastite Screw	0912-8001	55		

Items in bold & underlined print are only to be ordered by a service center.

N/A = Not Available

Rev. 12-04-02 Pav