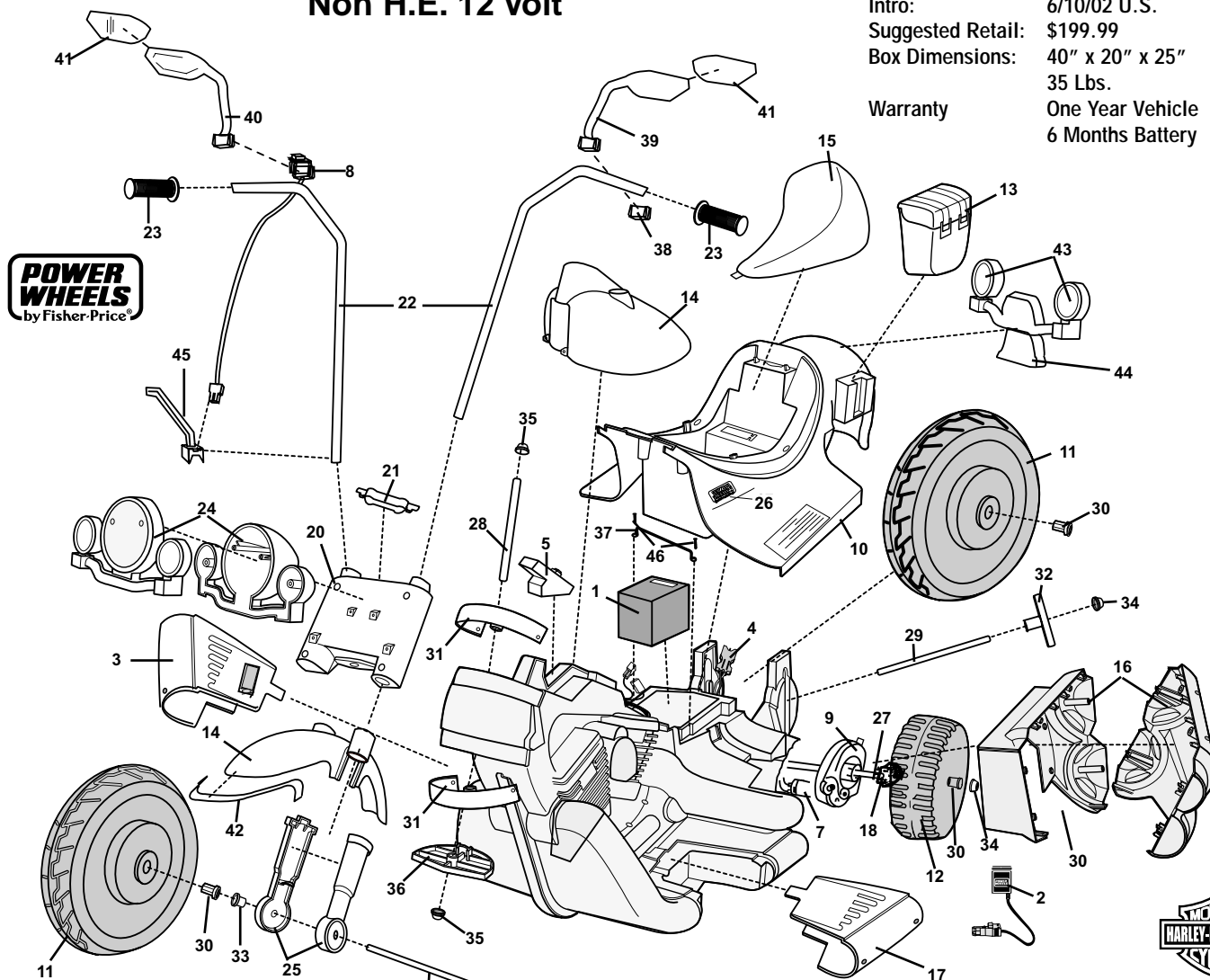


For 73210-9997 Harley Davidson Motorcycles made after 6/10/02

73210-9997

Harley Davidson® Motorcycle Advanced Series Non H.E. 12 Volt

Age Range: 3-7 Yrs.
Weight Limit: 65 Lbs.
Surfaces: Grass & Hard
Speed: 2.5 / 5.0 MPH Forward
2.5 MPH Reverse
Colors: Blue Body
Flame Trim
Intro: 6/10/02 U.S.
Suggested Retail: \$199.99
Box Dimensions: 40" x 20" x 25"
35 Lbs.
Warranty: One Year Vehicle
6 Months Battery



Rev. 12/05/02 Pav

3 AA Batteries Required for Soundbox

Item No.	Description	Part No.	Qty.	Item No.	Description	Part No.	Qty.	Item No.	Description	Part No.	Qty.
Working / Electrical Parts											
1	12 Volt Battery	00801-0638	1	18	Driver	73233-2239	2	38	Mirror Clamp	75209-2429	2
2	12V Charger	00801-0972	1	20	Fork (Front fork)	75201-2349	1	39	Mirror Housings Left	75209-2449	1
3	Right Footboard Assembly w/switch	74370-9239	1	21	Fork Cover/clamp	74370-2289	1	40	Mirror Housing Right	74287-2429	1
4	Wiring Harness Assembly	74290-9799	1	22	Handlebar Set (banded)	74287-9029	1	41	Mirror Lens	75209-2469	2
5	Soundbox	74290-9559	1	23	Handgrip	74290-2399	2	42	Fender tip	75210-2419	1
6	#7 Motor Gearbox Assm.	00968-2901	2	24	Headlight Assembly	74370-9289	1	43	Tail light cover	75210-2479	2
7	Motor w/Pinion	74290-9539	2	25	Shock Set (banded)	74370-9329	1	44	Tail light assm	75210-2299	1
8	Handlebar harness w/cover	74287-9759	1	26	PW Emblem	74460-9069	2	45	Wire Cover	74287-2439	1
9	Gearbox W/Out Motor	00968-2801	2	Hardware / Metal Parts							
Plastic / Other Parts											
10	Body (N/A)	73210-2109	1	27	Axle (drive wheel)	74290-4509	1	46	#8 x 3/4" Screw	0912-8001	61
11	Large Wheel	74290-2159	2	28	Axle (fork)	74290-4529	1	Parts Not Shown			
12	Drive Wheel (Small)	74290-2269	2	29	Axle (front/rear wheel)	74290-4519	2	Decal Sheet	73210-0320	1	
13	Saddle Bag	74290-2129	2	30	Bushing (hex)	73233-2559	6	Owner's Manual	73210-0921	1	
14	Front Fender and Gas Tank	3800-6731	1	31	Bushing (steering)	74370-2359	2	Hardware Bag	73210-9289	1	
15	Seat	74290-2309	1	32	Bearing (axle/silver)	74370-2379	2	Large Parts Bag	73210-9299	1	
16	Exhaust Set (Inner and outer)	74370-9169	1	33	Bushing 7/16" (round/black)	74550-2689	2	Control Switch	00801-0873	1	
17	Footboard / Left	74370-2249	1	34	.437 Cap Nut	0801-0226	6	Adhesive clip	0801-0313	1	
Items in bold & underlined print are only to be ordered by a service center. N/A = Not Available											