

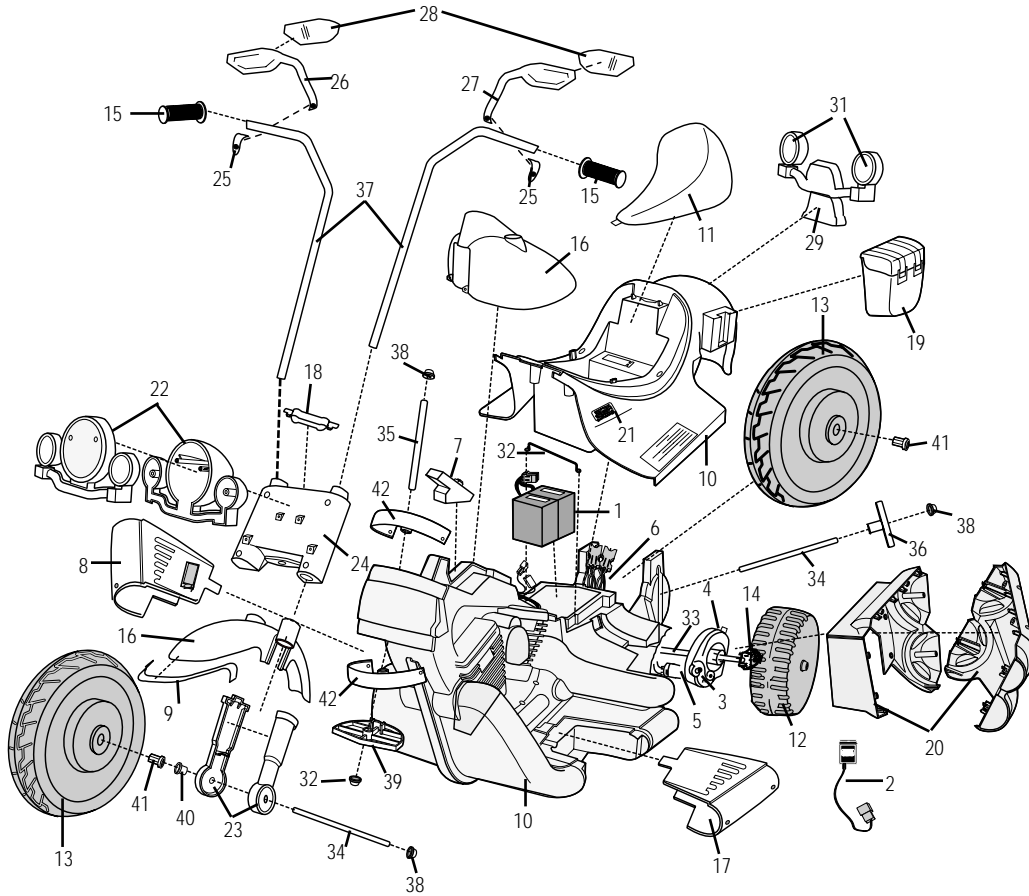
For 73218-9993 Harley Davidson Motorcycles made before 6/10/02



73218-9993 Harley

Advanced Series 12 Volt

Age Range: 3 to 7
 Weight Limit: 65 lbs
 Surfaces: Hard and grass
 Speed: 2.5/5.0
 Forward
 2.5 reverse
 Colors: Black and Grey
 Intro: 2001
 Suggested Retail: \$199.99
 Box Dimensions: 40 x 20 x 25
 Warranty
 One Year Vehicle
 6 Months Battery



Rev. 12-05-02 Pav

Item No.	Description	Part No.	Qty.	Item No.	Description	Part No.	Qty.	Item No.	Description	Part No.	Qty.
Working / Electrical Parts				24	Upper fork	75200-2349	1	Parts Not Shown			
1	Battery Super 6 volt	00801-0712	2	25	Mirror Clamp	75209-2429	2	Large Parts Bag	73218-9249	1	
2	Charger	00801-0973	1	26	Mirror Housing Left	75209-2449	1	Small Parts Bag	73210-9139	1	
3	<u>Motor Gearbox Assembly</u>	<u>00968-2901</u>	2	27	Mirror Housing Right	75209-2459	1	Hardware Bag N/A	73210-9279	1	
4	<u>Gearbox W/out Motor</u>	<u>00968-2801</u>	2	28	Mirror Lens Set	75209-2469	1	Sub Hardware Bag	73210-9289	1	
5	<u>Motor Pinion Assembly</u>	<u>74290-9539</u>	2	29	Tail Light	75210-2299	1	Paper Kit	73218-paper	1	
6	<u>Main Harness Assembly</u>	<u>74290-9799</u>	1	31	Tail Light Cover	75210-2479	2	Paper Kit contains manual and both Decal sheets			
7	Sound box	74290-9559	1	Hardware / Metal Parts				Footswitch	00801-0933	1	
8	Right Footboard with switch	74370-9239	1	32	Battery Retainer	74290-4419	1	Control Switch	00801-0873	1	
Plastic / Other Parts				33	Drive Wheel Axle	74290-4509	1	Decal Sheet	73210-0310	1	
9	Fender Tip	75210-2419	1	34	Front and rear axle	74290-4519	2				
10	Body	N/A	1	35	Fork Axle	74290-4529	1				
11	Seat	74290-2309	1	36	Axle Bushing	74370-2379	2				
12	Wheel, Drive	74290-2269	2	37	Handle Bar Set	74290-9029	1				
13	Wheel Large	74290-2159	1	38	.354 Cap Nut	0801-0604	5				
14	Driver	73233-2239	2	39	Steering Stop	74370-2369	1				
15	Hand grip	74290-2399	2	40	7/16" Round Bushing	74550-2689	2				
16	†Fender and Gas Tank Set	74287-213A	1	41	Hex bushing	73233-2559	2				
17	Left Footboard	74370-2249	1	42	Steering Bushing	74370-2359	2				
18	Fork Clamp/cover	74370-2389	1								
19	Saddle bag	74290-2129	2								
20	Exhaust Set	74370-9169	1								
21	Power Wheels Emblem	74460-9069	1								
22	Headlight Set	74370-9289	1								
23	Shock Set	74370-9329	1								

N/A = Not Available † Gas tank and Front Fender are available only as a set, 74287-213A.

Items in **bold & underlined** print are only to be ordered by a service center.